



Deafblind Enablement Ltd

Welcome to Deafblind Enablement's July 2013 edition of "Network Newsletter"

2012 – 2013 has been a busy year for DBE as new deafblind people contact us to book specialist support and Sensory Teams and other organisations hear about us.

Dr Philip Gafga continues to play an important role as our Consultant on Deafblindness and we appreciate his input and support – please see his video footage on our website.

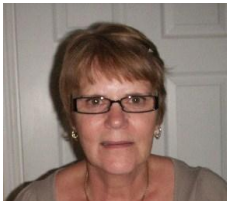
Deafblind Awareness Officers:

Sarah – East
Ron – North London
Avril – Essex
Alberta - Peterborough
Pauline – National
Annette – National
Julie – National
Charlie – South-West
Bill – South-West

All Awareness Officers are deafblind themselves.

Big 'Thank You' to DBE's assessors who work on DBE's Communicator-Guide Support Worker Course, who are themselves are deafblind.

The aim is to publish "Network Newsletter" annually; if you would like to be added to our mailing list to receive this and any updates or wish to provide us with your feedback to help us improve future issues, please do not hesitate to contact me.



Lynn Sargeant; tel 01733 746538
lynn@deafblind-enablement.co.uk
www.deafblind-enablement.co.uk
Registered No: 7480324

Our mission is to enable people with a sight and hearing loss to learn new skills, develop existing skills, gain access to their community and existing services with dignity, respect, control and choice.

News Update:

Deafblind Enablement continues to run Signature's Level 2 DBG Communicator-Guide training courses and this year has worked in partnership with a number of organisations to run this course; including several deafblind people who have successfully worked with DBE in obtaining **Skills for Care** funding to train PA's / Communicator-Guides to support them more appropriately.

This year, DBE has trained Communicator-Guides / PA's who are now providing specialist enabling support on a regular basis – **well done** to everyone for qualifying and now facilitate support to a high standard.

Some of the training we have provided over the last 12 months includes:

- **Total Communications, Reading:** DBG Level 2 for 14 of their interpreters and other staff.
- **Sensing Change in Ipswich, Hackney Social Care and Essex Cares:** Facilitating Deafblind Awareness/Specialist Assessment Training to Sensory team members.
- **Care Home, Salisbury:** Deafblind Awareness Training for key staff.
- **Peterborough:** 2 DBG Level 2 courses for PA's
- **Dudley:** DBG level 2 course for PA's.
- **Volunteer training:** for the 'Impaired Senses' monthly group run in partnership with St. Peter's Church in Yaxley, Peterborough.

Several interpreting agencies have also expressed an interest in commissioning our DBG Level 2 course enabling Interpreters to gain a nationally recognised qualification to work with deafblind people, identifying the different communication methods, gaining an understanding of deafblindness and skills to facilitate the appropriate service for each individual. Remark! Ltd has invested in CPD for interpreters by facilitating a course run by DBE in August.

Thank you to everyone who has commissioned us to provide training or who we are currently in negotiation with – it is only with your help that we can ensure that deafblind people receive the most appropriate quality support they vitally need.

DBE's Specialist Support:

Deafblind people are an extremely vulnerable group, hidden within society and often their lives are full of frustrations, isolation and loneliness. DBE recognises the vital support needed for deafblind people and provides fully qualified Communicator-Guides and Deafblind Interpreters on a flexible, adhoc or regular basis in line with the personalisation agenda.

DBE has provided support for over 250 medical appointments within the last year, including providing emergency round the clock Deafblind Manual Interpreter support to a deafblind gentleman when he was rushed into hospital late one evening and spent several days in intensive care.

DBE's partnership working with Hospitals and GP's continues to increase and is currently 20+ and we continue to negotiate with other health departments.

DBE has provided overnight interpreter support to deafblind people in hospital several times over the last year to enable them to receive appropriate communication and full access to information. Thank you to the hospitals who have funded this vital support; and to our dedicated and competent specialist trained staff team who have been happy to undertake this vital work.

DBE is pleased to continue to provide Interpreter support for Sensory Review meetings and other 'formal' meetings.

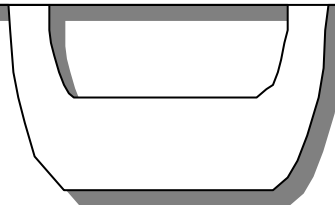
DBE continues to work closely with Capita (ALS) to provide support to people with a dual sensory loss attending medical appointments, including hospital, GP, dental and opticians appointments and we continue to provide 100% cover.

A number of service users who are contracting DBE to provide one-to-one specialist support on a regular or ad hoc basis enjoy the flexibility of the service using different communicator-guides, this service is growing nationally.

DBE's staff work on a flexible basis to fulfil assignments. **Call us if you, or someone you know, require specialist support.**

DBE is continually recruiting communicator-guides; communication support workers and interpreters to work with deafblind people nationally – please contact us for further details.

AND FINALLY: we send our best wishes to a dual sensory impaired lady; following an operation late last year both her communicator-guide and herself had a tear in their eye when on discharge from hospital she hugged the communicator-guide and said 'I can see, look at that over there'!! This lady was supported for many appointments before her operation and now no longer needs our support for medical appointments – what a fantastic outcome!



DBE recently took part in **Signature's research study** regarding deafblind qualifications. We continue to voice a DBG Level 3 course or modules are a critical need as delegates who are successful in gaining DBG Level 2 want to move onto the next level which currently does not exist and more importantly Deafblind Interpreters and Communicator-guides require further specialist training to provide quality support to deafblind people in a variety of settings.

Signature has assured DBE that a Visual Frame/Hands-on module will be available in 2014. DBE continues to propose developing deafblind manual interpreting and speech-to-text/note-taking modules.

If you would like DBE to meet with you to discuss services available and how we can provide a quality enabling service for deafblind people – please contact us.

DBE's Communicator-guide Schemes: We have a team of dedicated, experienced and qualified communicator-guides and deafblind interpreters to fulfill assignments on a flexible basis.

Meet some of DBE's dedicated team of qualified Communicator-Guides



Peterborough



Essex

Our team of trained communicator-guides continues to grow from strength to strength; thank you to all of them for their support over the last 12 months. We currently have +40 qualified staff nationally.

If you wish DBE to develop a Communicator-guide scheme in your area, please contact us to discuss.

DBE's Awareness Officers:

ANNETTE AND SULA

Awareness Officer, Annette: My role as a Deafblind Awareness Officer on the Specialist Assessment Course has enabled me to do what I love, raise awareness of deafblindness. I am asked to talk through my own lived experience of deafblindness, how I have adapted constantly throughout my life to the challenges of progressive deafblindness. I am asked many questions from the participants on the courses I attend.

They practice clear speech individually with me and I won't give anything away on what is expected when they consider my needs to facilitate communication. You will have to come on the course to find out! It is great for me as I can learn more from them and try to make the exercise as relevant to their needs in their varied workplace settings as well.



I have excellent support from Jane, a DBE Communicator-Guide who works with me and my Guide Dog Sula on the course days as well as supporting me at many other meetings in my capacity as co chair of a Deafblind Planning Group. Thank you DBE for your wonderful support and appreciative wags from Sula too!

Annette and her Guide Dog, Sula



Debbie James welcomes Charlie who became a Deafblind Awareness Officer for DBE in Autumn 2012

Facebook page: keep up to date with what is happening and 'like' us.



Dr Philip Gafga
Consultant on Deafblindness

YOU TUBE LINKS:

Thanks go to Matt Wallace at Janno Productions (www.jannoproductions.co.uk) for his help with producing DBE's videos; also thanks to Dr P Gafga our Consultant on Deafblindness (left) and to his communicator-guide, Marion. Thanks to Daniel for his website expertise. Without all of your help and support it would have not been possible to produce these videos. Please have a look at:

[http://www.deafblind-enablement.co.uk/Deafblind%20Perspectives Services%20and%20communication%20systems.php](http://www.deafblind-enablement.co.uk/Deafblind%20Perspectives%20Services%20and%20communication%20systems.php)

DBE is pleased to have raised awareness by training over 120 people in the period June 2012 – June 2013

Debbie, Director at DBE, has facilitated the Movement, Mobility and Orientation (MMO) 2 Module with Kim Watt, co-tutor on the Deafblind Studies Diploma. For further details of the Deafblind Studies Diploma visit <http://www.deafblind-enablement.co.uk> and follow the link on the left hand side of the page

Feedback: <http://www.deafblind-enablement.co.uk/Feedback.html>

Service User, Linda: Thank you very much to everyone at DBE for the help you gave me when I needed it; you all helped me such a lot; they are understanding and they do what they are asked by service users. Without the support of DBE I would not have got as far as I have, following my recent operation my sight has improved drastically and I now no longer need support for medical appointments. They are all excellent!
December 2012

Service User, Phil: the communicator-guide was very helpful and I felt completely at ease with her; the communicator-guides took the stress out of the day; we had the option to go where we wanted, when we needed to and didn't need to ask for the toilet, coffee, walk dog etc and have wait for someone else to support us; they gave feedback on visual environmental information, facial expressions and what was going on so that we were fully informed; we did not feel excluded in any way; I could think of what to say and felt confident, instead of worrying about the time and how I was going to get home. April / May 2013

Service User, Dorreen: I can't thank you enough but I want to say how much I thanks to millions for your has been arrangements and text then finally got sorted. Ooooh four lovely interpreters, I really enjoyed company ladies. Thanks to you all.

Rehab Assistant, Essex: The ad-hoc support for medical appointments programme is a valuable service for deafblind people; the reassurance of having someone to accompany them to the appointment and for them to be able to explain any information missed is very helpful and I know that people I have referred have been very grateful for this service.

Tracey, Rehab Officer: I found the Specialist Assessment Training a very useful course and this has enabled me to provide a very detailed Dual Sensory Loss assessment, which was completed with confidence.

Rehab Officer, Hackney: Debbie was very knowledgeable and I certainly came away knowing things I did not know before. The structure of the course was well put together and supported by Debbie's knowledge, experience and enthusiasm. The time spent with Annette was really good and stimulated worthwhile discussions. Some of the Rehab refresher was not entirely necessary, although the addition of dual sensory deprivation did add something new.

London Local Authority Training representative: Very professional - they look good!

TRAINING DATES FOR 2013:

Deafblind Awareness Course:

8 July – Redbridge, London
12 November – Euston, London

DBG 2 Communicator-Guide Support Worker Course:

Durham: 10, 11, 17, 18, & 19 September 2013
Fetcham, Surrey: 16, 17, 23, 24 & 25 October. 2013
Sandwell, Birmingham: 5, 6, 15, 18 & 19 November 2013

Specialist Assessment Course:

12 & 13 November – Euston, London

Thank you to everyone who has worked in partnership with us during the last 12 months to enable us to put on training courses, this includes:

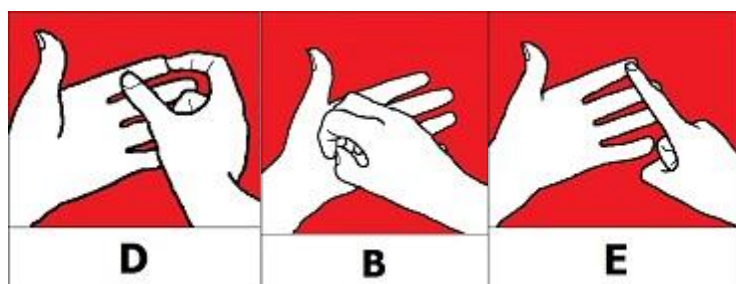
Guide Dogs
SAVI (Surrey Association for Visual Impairment)
Signature
Sandwell Sensory Team
And service users themselves who have commissioned us to
provide training for their PA's / Communicator-Guides

Contact us for a copy of our Training Brochure detailing all our courses and their learning outcomes.

DBE would like to hear from anyone who wishes to discuss their training needs and to commission in-house training courses in a cost effective, quality way. Please do not hesitate to contact us to discuss your individual requirements.

Contact Details: 01733 746538
info@deafblind-enablement.co.uk

www.deafblind-enablement.co.uk
Facebook page



DEAFBLIND ENABLEMENT LTD
5 Stephenson Close
Yaxley
Peterborough
PE7 3ZP

Registered No: 7480324